

Progress Fathom Management Standard Edition

FathomTrendDatabase Guide and Reference

Progress® software products are copyrighted and all rights are reserved by Progress Software Corporation. This manual is also copyrighted and all rights are reserved. This manual may not, in whole or in part, be copied, photocopied, translated, or reduced to any electronic medium or machine-readable form without prior consent, in writing, from Progress Software Corporation.

The information in this manual is subject to change without notice, and Progress Software Corporation assumes no responsibility for any errors that may appear in this document. The references in this manual to specific platforms supported are subject to change.

Allegrix, A [Stylized], ObjectStore, Progress, Powered by Progress, Progress Fast Track, Progress Profiles, Partners in Progress, Partners en Progress, Progress en Partners, Progress in Progress, P.I.P., Progress Results, ProVision, ProCare, ProtoSpeed, SmartBeans, SpeedScript, and WebSpeed are registered trademarks of Progress Software Corporation or one of its subsidiaries or affiliates in the U.S. and/or other countries. AccelEvent, A Data Center of Your Very Own, Allegrix & Design, AppsAlive, AppServer, ASPen, ASP-in-a-Box, BusinessEdge, Business Empowerment, Empowerment Center, eXcelon, Fathom, Future Proof, IntelliStream, ObjectCache, OpenEdge, PeerDirect, POSSE, POSSENET, Progress Business Empowerment, Progress Dynamics, Progress Empowerment Center, Progress Empowerment Program, Progress for Partners, Progress OpenEdge, Progress Software Developers Network, PSE Pro, PS Select, SectorAlliance, SmartBrowser, SmartComponent, SmartDataBrowser, SmartDataObjects, SmartDataView, SmartDialog, SmartFolder, SmartFrame, SmartObjects, SmartPanel, SmartQuery, SmartViewer, SmartWindow, Technical Empowerment, WebClient, and Who Makes Progress are trademarks or service marks of Progress Software Corporation or one of its subsidiaries or affiliates in the U.S. and other countries.

Java and all Java-based marks are trademarks or registered trademarks of Sun Microsystems, Inc. in the U.S. and other countries.

Any other trademarks or service marks contained herein are the property of their respective owners.

Fathom Management includes software developed by the Apache Software Foundation (<http://www.apache.org/>). Copyright © 1999 The Apache Software Foundation. All rights reserved (Xalan XSLT Processor) and Copyright © 2000-2002 The Apache Software Foundation. All rights reserved (Jakarta-Oro). The names “Apache,” “Xerces,” “Jakarta-Oro,” and “Apache Software Foundation” must not be used to endorse or promote products derived from this software without prior written permission. Products derived from this software may not be called “Apache” or “Jakarta-Oro,” nor may “Apache” or “Jakarta-Oro” appear in their name, without prior written permission of the Apache Software Foundation. For written permission, please contact apache@apache.org. Software distributed on an “AS IS” basis, WITHOUT WARRANTY OF ANY KIND, either express or implied. See the License for the specific language governing rights and limitations under the License agreement that accompanies the product.

Fathom Management includes software developed by ACME Labs. Copyright © 2000 by Jef Poskanzer <jef@acme.com>. All rights reserved. Software distributed on an “AS IS” basis, WITHOUT WARRANTY OF ANY KIND, either express or implied. See the License for the specific language governing rights and limitations under the License agreement that accompanies the product.

Fathom Management includes software developed by Sun Microsystems, Inc. Copyright © 2003 Sun Microsystems, Inc. All Rights Reserved. Software distributed on an “AS IS” basis, WITHOUT WARRANTY OF ANY KIND, either express or implied. See the License for the specific language governing rights and limitations under the License agreement that accompanies the product.

Fathom Management includes the Jetty Package Copyright © 1998 Mort Bay Consulting Pty. Ltd. (Australia).

Fathom Management includes software developed by the ModelObjectsGroup (<http://www.modelobjects.com>). Copyright © 2000-2001 ModelObjects Group. All rights reserved. The name “ModelObjects” must not be used to endorse or promote products derived from the SSC Software without prior written permission. Products derived from the SSC Software may not be called “ModelObjects”, nor may “ModelObjects” appear in their name, without prior written permission. For written permission, please contact djacobs@modelobjects.com.

Fathom Management includes files that are subject to the Netscape Public License Version 1.1 (the “License”); you may not use this file except in compliance with the License. You may obtain a copy of the License at (<http://www.mozilla.org/NPL>). Software distributed under the License is distributed on an “AS IS” basis, WITHOUT WARRANTY OF ANY KIND, either express or implied. See the License for the specific language governing rights and limitations under the License. The Original Code is Mozilla Communicator client code, released March 31, 1998. The Initial Developer of the Original Code is Netscape Communications Corporation. Portions created by Netscape are Copyright © 1998-1999 Netscape Communications Corporation. All Rights Reserved.

Fathom Management contains copyright material licensed fromAdventNet, Inc. <http://www.adventnet.com>. All rights to such copyright material rest with AdventNet.

Fathom Management includes the RSA Data Security, Inc. MD5 Message-Digest Algorithm. Copyright © 1991-2, RSA Data Security, Inc. Created 1991. All rights reserved.

August 2004



Product Code: 4496

Release: V3.0A

Contents

Preface	Preface-1
1. Managing FathomTrendDatabase Data	1-1
Managing the FathomTrendDatabase size	1-2
Sizing guidelines for the FathomTrendDatabase	1-2
How data compacting works	1-4
Running compaction as a scheduled job	1-5
Compacting and purging data	1-5
Compacting and retaining data	1-5
Purging data	1-5
2. Database Compaction Job	2-1
Creating compaction job instances	2-2
Editing advanced information	2-6
Environment variables for Trend Data Compaction jobs	2-8
Viewing compaction statistics	2-8
3. FathomTrendDatabase Schema	3-1
Table and field name definitions	3-2
Configuration tables	3-4
Content of the configuration tables	3-5
Compaction details for configuration tables	3-10
FathomTrendDatabase tables	3-11
Contents of the FathomTrendDatabase tables	3-13
Compaction details for database tables	3-29
OpenEdge tables	3-31
System tables	3-37
Compaction details for system tables	3-43

Archive tables	3-43
Common archive fields	3-46
Complete contents of an archived table	3-47
Database analysis tables	3-49
Db_TabAnalysis table	3-49
Db_IdxAnalysis table	3-50
Network table	3-52
Index	Index-1

Figures

Figure 2-1:	Create Custom Job page	2-2
Figure 2-2:	Data Compaction Job page	2-3
Figure 3-1:	Configuration table relationships	3-4
Figure 3-2:	Database table relationships	3-12
Figure 3-3:	OpenEdge AppServer table relationships	3-31
Figure 3-4:	OpenEdge WebSpeed table relationships	3-32
Figure 3-5:	System table relationships	3-42

Tables

Table 2–1:	Environment variables for Trend Data Compaction jobs	2–8
Table 3–1:	Table prefix definitions	3–2
Table 3–2:	Configuration table contents	3–5
Table 3–3:	Configuration table details	3–5
Table 3–4:	Configuration tables and the compaction process	3–10
Table 3–5:	FathomTrendDatabase tables	3–13
Table 3–6:	FathomTrendDatabase table details	3–14
Table 3–7:	Configuration tables and the compaction process	3–29
Table 3–8:	OpenEdge tables	3–33
Table 3–9:	OpenEdge table details	3–33
Table 3–10:	System tables	3–37
Table 3–11:	System table details	3–38
Table 3–12:	System tables and the compaction process	3–43
Table 3–13:	Archive FathomTrendDatabase tables	3–44
Table 3–14:	Archive system tables	3–45
Table 3–15:	Archive OpenEdge tables	3–45
Table 3–16:	Common archive fields	3–46
Table 3–17:	Contents of the Ar_ActIdx table	3–47
Table 3–18:	Db_TabAnalysis table details	3–49
Table 3–19:	Db_IdxAnalysis table details	3–50
Table 3–20:	Net_Data table details	3–52

Preface

This Preface contains the following sections:

- [Purpose](#)
- [Audience](#)
- [Fathom Management with OpenEdge or Progress](#)
- [Organization](#)
- [Typographical conventions](#)

Purpose

This guide describes how to manage your Progress® Fathom™ Management Standard Edition FathomTrendDatabase. This guide assumes you are familiar with basic Fathom monitoring terms and concepts, as explained in the *Resource Monitoring Guide*.

Throughout this guide, Fathom Management Standard Edition is referred to as Fathom.

Audience

This guide is designed for users of the Fathom Management product. Typical users are OpenEdge™ database administrators and any others responsible for the daily management of the FathomTrendDatabase.

Fathom Management with OpenEdge or Progress

Fathom Management Version 3.0A runs against the following:

- OpenEdge 10.0B.
- Progress Version 9.1D and the 9.1D09 service pack.

For the sake of simplicity, the procedures and screen shots provided in this manual refer to running Fathom against OpenEdge 10.0B. However, be assured that unless indicated otherwise, the procedures are the same for both Progress Version 9.1D with the 9.1D09 service pack and OpenEdge 10.0B. For example, if a procedure refers to an OpenEdge database, the procedure applies to a Progress database as well.

Organization

Chapter 1, “Managing FathomTrendDatabase Data”

Provides an overview of ways to manage FathomTrendDatabase data, including data compaction and purging. Also gives examples of how the size of the FathomTrendDatabase grows over time.

Chapter 2, “Database Compaction Job”

Provides details about creating and running a Database Compaction job instance.



Chapter 3, “FathomTrendDatabase Schema”

Describes the FathomTrendDatabase schema.

Typographical conventions

This manual uses the following typographical conventions:

Convention	Description
Bold	Bold typeface indicates commands or characters the user types, or the names of user interface elements.
<i>Italic</i>	Italic typeface indicates the title of a document, provides emphasis, or signifies new terms.
SMALL, BOLD CAPITAL LETTERS	Small, bold capital letters indicate OpenEdge™ key functions and generic keyboard keys; for example, GET and CTRL .
KEY1-KEY2	A hyphen between key names indicates a <i>simultaneous</i> key sequence: you press and hold down the first key while pressing the second key. For example, CTRL-X .
KEY1 KEY2	A space between key names indicates a <i>sequential</i> key sequence: you press and release the first key, then press another key. For example, ESCAPE H .

Convention	Description
Syntax:	
Fixed width	A fixed-width font is used in syntax statements, code examples, and for system output and filenames.
<i>Fixed-width italics</i>	Fixed-width italics indicate variables in syntax statements.
<i>Fixed-width bold</i>	Fixed-width bold indicates variables with special emphasis.
UPPERCASE fixed width	Uppercase words are Progress® 4GL language keywords. Although these always are shown in uppercase, you can type them in either uppercase or lowercase in a procedure.
	This icon (three arrows) introduces a multi-step procedure.
	This icon (one arrow) introduces a single-step procedure.

Managing FathomTrendDatabase Data

As you work with Progress® Fathom™ Management, the amount of information stored in the FathomTrendDatabase grows over time. Periodically, you can perform compaction and purging of this data. This chapter describes the compaction and cleanup process as outlined in the following sections:

- [Managing the FathomTrendDatabase size](#)
- [How data compacting works](#)
- [Running compaction as a scheduled job](#)

Managing the FathomTrendDatabase size

Because the FathomTrendDatabase stores all the trend data, it can, over time, become large and require maintenance. You have several different options in how to manage the data stored in the FathomTrendDatabase. You can:

- Compact the data, moving it from the FathomTrendDatabase into an archive, and purge the archive.
- Compact the data, moving it from the FathomTrendDatabase into an archive, and retain the archive.
- Purge the data without compacting it.

Sizing guidelines for the FathomTrendDatabase

As Fathom runs, it gathers statistics on defined Fathom resources. These statistics are accumulated in several tables in the FathomTrendDatabase. Every time Fathom trends data from a resource, a sample is added to that particular table. The following example shows how the amount of data trended affects the size of the FathomTrendDatabase.

Example

For this example, the following quantities of trends are used for one trend sample:

- 5 alerts
- 10 tasks (jobs and/or reports)
- 25 database files
- 10 areas
- 10 checkpoints
- 25 system disks
- 25 file systems
- 5 FileSize
- 50 Database Analysis
- 50 Index Analysis

The following are single rows in the FathomTrendDatabase:

- Samples
- Activity for APW
- Buffers
- Index
- I/O by type
- Locks
- Logging (AI and BI)
- Records
- Servers
- Summary
- Network
- CPU
- Memory
- Status

Note: If Table Statistics and Index Statistics are trended, there are 50 rows of each.

The above resources will render approximately 12.2K worth of data stored in the FathomTrendDatabase, broken down as follows:

- **Database** — 3.4K
- **System information** — 4.1K
- **Configuration information (including tasks)** — 3.0K
- **Index information (for all of the above samples)** — 1.7K

If Table Statistics and Index Statistics are trended, they result in 5.4K and 7.1K worth of data, respectively. Additional index information for Table and Index Statistics rows results in approximately 920 bytes.

Scenario one

Using the quantities and values defined for the example, trending every 5 minutes for 24 hours over a 7-day period results in 2016 samples (288 5-minute periods in a day multiplied by 7 days). These 2016 samples result in a FathomTrendDatabase of approximately 28.3MB.

Scenario two

Using the quantities and values defined for the example, trending every 15 minutes for 24 hours over a 7-day period results in 672 samples (96 15-minute periods in a day multiplied by 7 days). These 672 samples result in a FathomTrendDatabase of approximately 22.5MB.

How data compacting works

When you run FathomTrendDatabase compaction (as a job), the compaction takes a number of the records and compacts them in a different table in the FathomTrendDatabase. For example, the compaction might take the first four records in the table and combine them into one record in the archive table.

Note that as part of the compaction process, the records physically move to the archive table, so they are deleted from the real-data table. The archive automatically creates an hourly, daily, and weekly version of each sample, as follows:

- **Hourly** — Takes all the data for an hour and compacts it into one record for that hour. This compaction method takes records for one hour and reduces them to one row.
- **Daily** — Takes all the data for a day and compacts it into one record for that day. This compaction method takes records for one day and reduces them to one row.
- **Weekly** — Takes all the data for seven days and compacts it into one record. The day technically begins at midnight on Saturday night. This method takes records for seven days and reduces them to one row.

Caution: There is no option to undo the deletion of data samples from a real-data table following the compaction.

Running compaction as a scheduled job

Fathom provides a default Database Maintenance job that you can use to run the compaction. This default job runs the compaction once each week on any data older than one month. By compacting only the most historical data, you can save some of the current data in the table and use it for more detailed reporting purposes, for example.

You can determine at what time the compaction is run. You can also change the job characteristics if you want to run the compaction more or less frequently. See the [“Creating compaction job instances”](#) section on page 2–2 for detailed steps on setting up a compaction job instance.

Compacting and purging data

Specifying a different compaction date instead of purging the data also helps to maintain your database size. You should compact data that is older than 30 days and purge data that is older than 540 days.

Compacting and retaining data

When you run the compacting job, the compaction moves the database records into an archive table. You can retain the archive table and still have access to the compacted data. Note, however, that after the compaction the data is available only in the archive table. The compaction process removes the data from the real-data table.

Purging data

If you want to purge data without compacting it, you can specify the same number of days for the compacting and the purging.

Database Compaction Job

Use the Data Compaction job to manage the size of your FathomTrendDatabase. This chapter explains how to create and schedule a data compaction job instance and how to view a finished job's statistics as described in the following sections:

- [Creating compaction job instances](#)
- [Editing advanced information](#)
- [Viewing compaction statistics](#)

Creating compaction job instances

The DataCompaction job compacts and purges data in the FathomTrendDatabase. The primary purpose of this job is to help you to manage the size of the FathomTrendDatabase.

Access the DataCompaction job from the **Create Custom Job** page, as shown in [Figure 2–1](#).



Figure 2–1: Create Custom Job page

You must complete the necessary fields on the **Data Compaction Job** page, shown in [Figure 2-2](#), to set up and run a database compaction job instance.

Data Compaction Job:

Save Cancel

Properties

Name:

Description:

Compact trend data more than: days old

Purge archived data more than: days old

Working directory:

Output file (stdout): Append? ☐

Output file (stderr): Append? ☐

Debug log file? ☐

Indicate if the job can be used as an action

Action: ☒

Completion Actions and Alerts:

Figure 2-2: Data Compaction Job page



To set up and run a data compaction job:

1. Provide values for the **Name** and **Description** fields. The **Name** field is required.
2. In the **Compact trend data more than days old** field, identify the number of days for which you intend to compact data. A day, as defined for this field, begins at midnight. This is a required field.

Note: You can compact only data more than a week old. If you enter a value of 1-6, no data compaction will take place.

In the **Purge archived data more than days old** field, specify the number of days worth of data you want purged from the database.

3. Enter a value in the **Working directory** field. Note that the **Working directory** field identifies the command's current working directory. The directory you specify must exist. This property defaults to the working directory defined at installation.
4. Enter values in the **Output file (stdout)** and **Output file (stderr)** fields. The stdout location indicates where messages will be retained and the stderr location indicates where error messages will be retained. To append subsequent messages to these files, select the **Append** option.
5. Select the **Debug log file** option to obtain diagnostic details that help you debug job properties when setting up a job.

For example, you can set this option and use the **Run Now** feature on the **Job Summary** page. Once you have submitted the job, Fathom makes debug trace file data available through the debug trace file link in the **Job History** section of the **Job Summary** page.

6. Select the **Action** option to indicate if the job can be used as an action. See the [Resource Monitoring Guide](#) for more information about actions.

If you intend to set up actions and alerts for this job, click the **Edit** button associated with the **Completion Actions and Alerts** field. The **Job Completion Actions and Alerts** page appears:

Job Completion Actions and Alerts: Wkly_Compaction

Save Cancel

Action Definition

Exit Code	Action	Operation
<input type="text"/>	Default_Action	Add/Update Delete
default	None	

Alert Definition

Alert if execution time exceeds: Hours

On alert perform action:

7. Define any actions or alerts, then click **Save** to return to the **Data Compaction Job** page. See the *Resource Monitoring Guide* for more information about associating actions with alerts.
8. Click **Save** on the **Data Compaction Job** page. The **Summary** page appears:

Data Compaction Job: Mnthly_Compaction

[Edit](#) [Copy](#) [Delete](#) [Run Now](#) [Schedule](#)

Job history
[View Job History](#)
View the status of jobs that have finished running

Properties

Compact data more than:	8 days
Purge data more than:	30 days

Working directory:	/usr1/besg/progress/100b/wrk
Input file (stdin):	None
Output file (stdout):	/usr1/besg/progress/100b/wrk/Test.out
Output file (stderr):	/usr1/besg/progress/100b/wrk/Test.err
Debug log file:	None
Advanced information:	view

Next 5 scheduled runs:

Jun 1, 2004 6:00:00 PM
Jul 1, 2004 6:00:00 PM
Aug 1, 2004 6:00:00 PM
Sep 1, 2004 6:00:00 PM
Oct 1, 2004 6:00:00 PM
...

Once you create a Data Compaction job instance, you can view and edit the job's advanced information.

Editing advanced information

The **Advanced information** page displays the name of the user, the job's command, the command's parameters, and the job's environment variables.



To edit the advanced information for a data compaction job:

1. Click **View** on the **Data Compaction Job Summary** page. The **Advanced information** page appears:

Advanced information for: Mnthly_Compaction

Edit Cancel

Properties

User name:

Command: \$(PERL5BIN)/perl

Command parameters: \$(fathomInstallDir)/perl/scripts/dataCompact.pl

Environment
name=value pairs

2. Click **Edit**. The **Data Compaction Job Advanced Information** page appears:

Data Compaction Job Advanced Information: Mnthly_Compaction

Save Cancel

Properties

Name: Mnthly_Compaction

Description: [Empty text box]

Account information

User name: [Empty text box]

Group: [Empty text box]

Password: [Empty text box]

Job specification

Command: \$PERL5BIN/perl

Command parameters: \$fathomInstallDir/perl/scripts/dataCc

Environment name=value pairs

[Empty text box]

3. Enter the account information for the user who will run the job. Note that the default is the user who started the AdminServer.
4. To change the job specifications, enter the appropriate command and command parameters. If you want to change the job specifications, consider creating a new job template. See the *Resource Monitoring Guide* for steps on creating custom job templates.
5. Enter applicable environment variables. See [Table 2–1](#) for Data Compaction environment variables.
6. Click **Save**. The **Advanced Information** page reappears.

Environment variables for Trend Data Compaction jobs

Table 2–1 identifies and describes the environment variables used with database compaction jobs.

Table 2–1: Environment variables for Trend Data Compaction jobs

Variable	Description
FM_DBCCOMPACTDAYS	Identifies the number of days for which you intend to compact data. A day, as defined for this field, begins at midnight.
FM_DBCPURGEDAYS	Specifies the number of days’ worth of data you want purged from the database.

Viewing compaction statistics


You can review information regarding data compaction by looking in the output file you specified when setting up the compaction job.



To access a job’s output files:

1. From the **Job History** section of the job’s summary page, click **View Job History**. The **Job History** page appears.

- 2. Submit the date range for your query. Jobs that ran during the time period appear at the bottom of the **Job History** page as shown:

 Job History: Mnthly_Compaction as of: May 28, 2004 2:20:14 PM

Submit

Cancel

Purge Selection

Job History query

Select a *Start Date* range for the query (dd/mm/yyyy)

From:

21

/

5

/

2004

To:


28

/


5

/

2004

Job Name	Start Time	End Time	Command	Exit Code
 Mnthly_Compaction	May 28, 2004 2:20:06 PM	May 28, 2004 2:20:13 PM	\${PERL5BIN}/perl	0

- 3. Click the name of the job. In this example, the job is **Mnthly_Compaction**. The **Job Status** page appears:

 Job Status: Mnthly_Compaction

<<

Status properties:

Site ID:

finch.bedford.progress.com

Name:

Mnthly_Compaction

Type:

22

Description:

Resource(s):

Command:

\${PERL5BIN}/perl

Arguments:

[\$fathomInstallDir]/perl/scripts/dataCompact.pl]

Directory:

/usr1/besg/progress/fmwork

Input File:

Output File:

[/usr1/besg/progress/fmwork/Mnthly_Compaction.out](#)

delete

Error File:

[/usr1/besg/progress/fmwork/Mnthly_Compaction.err](#)

delete

Debug LogFile:

None

Start Date:

May 28, 2004 2:20:06 PM


End Date:

May 28, 2004 2:20:13 PM

Exit Code:

0

4. Click the link of the .out file. The file displays in a log file viewer:

 **Job: Mnthly_Compaction**
 /usr1/besg/progress/fmwork/Mnthly_Compaction.out
 May 28, 2004 2:20:44 PM

First Prior Next Last Reload

Go To

Show: Overlap:

Display: ☒ Ascending ☐ Descending

Mnthly_Compaction log file summary	
Size of log:	6.66 KB
Lines in log:	88
Display start line:	69
% of log at start line:	78.4 %
Log file status:	unchanged

```

69 05/28/04 14:20:12 OE_ActSrv: Daily/Weekly Compaction Records Written
70 05/28/04 14:20:13 OE_ActWSProc: Begin hourly record creation.
71 05/28/04 14:20:13 Hourly compaction records written for OE_ActWSProc t
72 05/28/04 14:20:13 Records deleted from OE_ActWSProc table :      0
73 05/28/04 14:20:13 OE_ActWSProc: Daily/Weekly Compaction Records Writte
74 05/28/04 14:20:13 Hourly Compaction Records Written for OE_AppService
75 05/28/04 14:20:13 Records deleted from OE_AppService table :
76 05/28/04 14:20:13 Hourly Compaction Records Written for Process table
77 05/28/04 14:20:13 Records deleted from Sys_Process table :      0
78 05/28/04 14:20:13 Record count for daily records :      0
79 05/28/04 14:20:13 Record count for weekly records :      0
80 05/28/04 14:20:13 Ar_Process: Completed daily and weekly compaction fo
81 05/28/04 14:20:13
82 05/28/04 14:20:13 New Archive Records: 3 Site ID: finch.bedford.progre
83 05/28/04 14:20:13 Data older than 05/16/04 has been archived.
84
85 05/28/04 14:20:13 Archiving unlocked.
86 Fri May 28 14:20:13 2004 Ending data compaction for finch.bedford.prog
87
  
```

The following information will help you navigate through the job output and error files:

- Use the **Show** field to control how many database log file entries display at one time. The number entered into the **Show** field cannot be less than 10.
- Use the **Overlap** field to control how many entries are repeated from screen to screen.
- The value in the **Overlap** field cannot be more than the number in the **Show** field minus one. For example, if you show 30 entries, you can overlap only 29 or fewer of them.
- Click **Reload** after changing the values in the **Show** field or **Overlap** field. If you do not reload, the viewer displays the previous values.

- Click **Go To** to control which numbered entry in the log file the viewer begins its display with. For example, a value of 10 entered into the **Go To** field will begin the display from the tenth log file entry.

Note: You must click **Go To** after entering a value in the **Go To** field, or the viewer will not update its display.

- The default display of entries is in ascending order; choose **Descending** to change the display.
- Click **First** to display the first x entries, where x is the value in the **Show** field.
- Click **Previous** to display the previous x entries, where x is the value in the **Show** field.
- Click **Next** to display the next x entries, where x is the value in the **Show** field.
- Click **Last** to display the last x entries, where x is the value in the **Show** field.
- To view additional log file entries without changing your current starting log file entry, leave the **Go To** field blank, change the value in the **Show** field, and click **Reload**.

Note: Fathom considers a viewer that has been inactive for more than four hours “stale.” Once a viewer becomes stale, Fathom releases ninety-five percent of any memory it holds. If you try to use a stale viewer, Fathom automatically reloads the file. Because additional resource activity might have occurred during the viewer’s inactivity, the reloaded log file view might not match the previous log file view of that resource.

Fathom considers a viewer that has been inactive for forty-eight hours “dead.” Once a viewer dies, Fathom releases all of its memory. To return to the log file displayed in a dead view, you need to renavigate to it, even if you pinned up the view or saved a link to it before the viewer died.

FathomTrendDatabase Schema

When writing reports or viewing alerts, you might find it helpful to understand the Fathom database schema. This chapter contains information about the following:

- [Table and field name definitions](#)
- [Configuration tables](#)
- [FathomTrendDatabase tables](#)
- [OpenEdge tables](#)
- [System tables](#)
- [Archive tables](#)
- [Database analysis tables](#)
- [Network table](#)

Table and field name definitions

The naming of tables and fields in the Fathom database follows certain conventions. Each table and field name consists of a prefix and a suffix, separated by an underscore. The prefix indicates which resource the table or field is related to. The suffix indicates the name of the data and might contain a subsection. The suffix cannot be more than 15 characters long. [Table 3–1](#) explains each prefix.

Table 3–1: **Table prefix definitions** (1 of 2)

Prefix	Table or field contents	Description
Cf_	Configuration data	Tables or fields that store configuration information for such Fathom functions as schedules, resource identification, and alert definitions. See the “Configuration tables” section on page 3–4 for more information.
Sys_	System data	Tables or fields that store raw data collected from samplings of such resources as CPU, disk, and memory. See the “System tables” section on page 3–37 for more information.
Db_	Database data	Tables or fields that store data gathered from OpenEdge™ databases. Sample data includes I/O, user statistics, and memory management. See the “Compaction details for configuration tables” section on page 3–10 and the “Database analysis tables” section on page 3–49 for more information.

Table 3–1: Table prefix definitions*(2 of 2)*

Prefix	Table or field contents	Description
OE_	OpenEdge Server data	Tables or fields that store data gathered from WebSpeed® and AppServer™. Note: Fathom supports management of the WebSpeed® Transaction Server product. Throughout this guide, WebSpeed Transaction Server and WebSpeed are used interchangeably.
Ar_	Archive data	Tables or fields that store data gathered from OpenEdge databases for archiving purposes. Sample data includes all fields and data associated with a given table and archive-specific fields. Data stored in system and database tables can be archived; data stored in configuration tables cannot be archived. See the “Archive tables” section on page 3–43 for more information.

Configuration tables

The schema of configuration tables is dependent upon many subsystems. [Figure 3–1](#) diagrams the relationship among the different configuration tables.

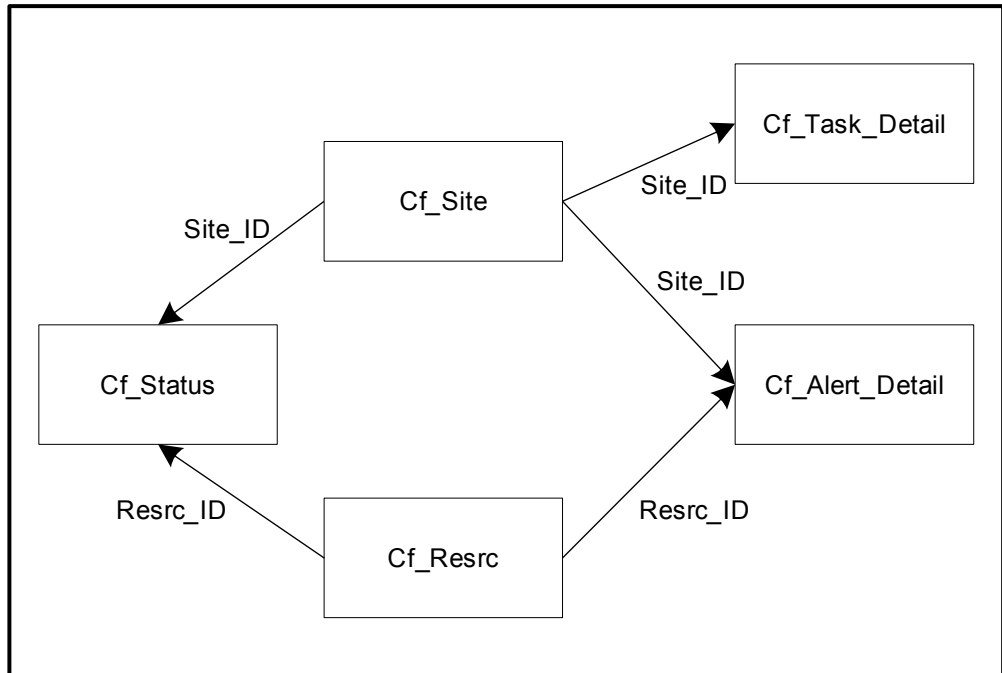


Figure 3–1: Configuration table relationships

Content of the configuration tables

Table 3–2 provides a listing of each configuration table’s contents.

Table 3–2: Configuration table contents

Table name	Table contents	Description
Alert_Detail	Historical alert information	Stores data about generated alerts.
Resrc	Resource identification	Stores data about each resource that can be viewed and/or monitored.
Sample	Sample master table	Stores data about any created samples, regardless of the resource.
Site	Site master table	Stores data about each configured site.
Status	Resource table status	Stores historical status changes of resources.
Task_Detail	Task execution history	Stores data about each executed task.

Table 3–3 lists field names and data types for each configuration table. For more information on the filename prefix, see Table 3–1.

Table 3–3: Configuration table details

(1 of 6)

Filename	Field name	Data type	Description
Cf_Alert_Detail	Alert_ID	Integer	Sequential identification number of the alert.
Cf_Alert_Detail	Alert_Resrc_ID	Integer	Standard resource identification number.
Cf_Alert_Detail	Alert_Date	Character	Standard site identification number.
Cf_Alert_Detail	Alert_Time	Integer	Date when the alert was generated.
Cf_Alert_Detail	Alert_Message	Character	Message generated for the alert.
Cf_Alert_Detail	Alert_Severity	Integer	Severity of the alert.

Table 3–3: Configuration table details*(2 of 6)*

Filename	Field name	Data type	Description
Cf_Alert_Detail	Alert_Threshold	Decimal	Threshold value that was broken.
Cf_Alert_Detail	Alert_Value	Decimal	Value that broke the threshold.
Cf_Alert_Detail	Alert_Who	Character	Name of the person who generated the alert.
Cf_Alert_Detail	Alert_Name	Character	Name of the alert.
Cf_Alert_Detail	Alert_Number	Integer	Number of the alert (that corresponds to the promsgs number).
Cf_Alert_Detail	Alert_ClearDate	Date	Date on which the alert was cleared.
Cf_Alert_Detail	Alert_ClearWho	Character	Name of the person who cleared the alert.
Cf_Alert_Detail	Alert_User1	Character	User-definable field.
Cf_Alert_Detail	Alert_ClearTime	Integer	Time when the alert was cleared.
Cf_Alert_Detail	Alert_ClearNote	Character	Specific note for the cleared alert.
Cf_Resrc	Resrc_Desc	Character	Description of the resource.
Cf_Resrc	Resrc_Host	Character	Fully qualified domain name of the resource's host machine.
Cf_Resrc	Resrc_ID	Integer	Sequential identification number of the resource.
Cf_Resrc	Resrc_IP	Character	IP address of the resource.
Cf_Resrc	Resrc_Loc	Character	Location of the resource.
Cf_Resrc	Resrc_Loc_Type	Character	Location type (directory, URL, or port).
Cf_Resrc	Resrc_Name	Character	Name of the resource.

Table 3–3: Configuration table details*(3 of 6)*

Filename	Field name	Data type	Description
Cf_Resrc	Resrc_Port	Integer	Port number of the resource.
Cf_Resrc	Resrc_Type	Character	Type of resource to be monitored.
Cf_Resrc	Site_ID	Character	Identification for the site containing the resource.
Cf_Sample	Resrc_ID	Integer	Sequential identification number of the resource.
Cf_Sample	Sample_Date	Date	Date when the sample interval was taken.
Cf_Sample	Sample_ID	Integer	Sequential identification number of the sample.
Cf_Sample	Sample_Len	Integer	Length, in seconds, of the sample interval.
Cf_Sample	Sample_Time	Integer	Time when the sample was gathered.
Cf_Sample	Sample_Trans	Integer	Number of transactions committed during the sample interval.

Table 3–3: Configuration table details*(4 of 6)*

Filename	Field name	Data type	Description
Cf_Sample	Sample_Type	Integer	Indicates the type of resource sampled. Possible values are: 1 - Unknown 3 - File Monitor 5- TCP Port 6 - UDP Port 8 - Web Site 11 - Database 13 - DNS Device 15 - FTP Site 16 - ICMP Port 19 - Log File 22- Job 23 - CPU 24 - Memory 25 - Disk 26 - File System 27 - User 28 - Email Action 29 - Command Action 30 - Log Action 31 - Report 32 - Search String 33 - Compound Action
Cf_Sample	Site_ID	Character	The ID given to the site (usually the host name).
Cf_Site	Site_ID	Character	Identification number for the site containing the resource.
Cf_Site	Site_PRGS_Vers	Character	OpenEdge release number.

Table 3–3: Configuration table details*(5 of 6)*

Filename	Field name	Data type	Description
Cf_Site	Site_Serial	Integer	OpenEdge serial number.
Cf_Site	Site_Machine_Name	Character	Machine name of site machine.
Cf_Site	Site_IP	Character	IP address of the site.
Cf_Status	Resrc_ID	Integer	Resource ID of the database for this site.
Cf_Status	Site_ID	Character	Site ID for the database.
Cf_Status	Status_ID	Integer	Sequential number generated by Fathom.
Cf_Status	Status_Date	Date	Date that the status change occurred.
Cf_Status	Status_Time	Integer	Time that the status change occurred.
Cf_Status	Status_Status	Character	The new status in effect.
Cf_Task_Detail	Site_ID	Character	Standard site identification number.
Cf_Task_Detail	Task_ID	Integer	Sequential identification number of the task that is used for storage.
Cf_Task_Detail	Task_Type	Integer	Type of task executed (22 indicates a user-defined task and 31 indicates a Fathom report).
Cf_Task_Detail	Task_Name	Character	Name of the task.
Cf_Task_Detail	Task_Desc	Character	Description of the task.
Cf_Task_Detail	Task_Command	Character	Command for the task.
Cf_Task_Detail	Task_Args	Character	Arguments passed to the task.
Cf_Task_Detail	Task_WorkDir	Character	Working directory for the task.

Table 3–3: Configuration table details (6 of 6)

Filename	Field name	Data type	Description
Cf_Task_Detail	Task_InFile	Character	Input file for the task. This file, if needed, is redirected into the command.
Cf_Task_Detail	Task_OutFile	Character	Standard output file for the task.
Cf_Task_Detail	Task_ErrFile	Character	Standard error file for the task.
Cf_Task_Detail	Task_StartDate	Date	Start date for the task.
Cf_Task_Detail	Task_StartTime	Integer	Start time for the task.
Cf_Task_Detail	Task_EndDate	Date	End date for the task.
Cf_Task_Detail	Task_EndTime	Integer	End time for the task.
Cf_Task_Detail	Task_ExitCode	Integer	Exit code passed back to Fathom. Zero denotes success; nonzero denotes failure.

Compaction details for configuration tables

Table 3–4 summarizes how the database compaction process affects data rows contained in the configuration tables.

Table 3–4: Configuration tables and the compaction process

Configuration table	What happens to table data during compaction
Cf_Sample	Sample rows will be removed and renumbered.
Cf_Alert_Detail	There is no data in this table to be summed. The contents of this table will be purged.
Cf_Task_Detail	There is no data in this table to be summed. The contents of this table will be purged.
Cf_Log	There is no data in this table to be summed. The contents of this table will be purged.

FathomTrendDatabase tables

If you have used the PROMON utility with an OpenEdge database before, the information displayed in the FathomTrendDatabase tables might look familiar to you. However, there is a difference between the information available through Fathom tables and that through PROMON. Fathom tables store data in one place, making it faster for you to view data. For example, all user information is contained in one table. To access user information with PROMON, you would have to view more than one PROMON screen. Unlike PROMON, Fathom must access only one table to return a view of user statistics.

As with configuration tables, the schema of these tables is dependent upon many subsystems. [Figure 3–2](#) shows the relationship among these tables.

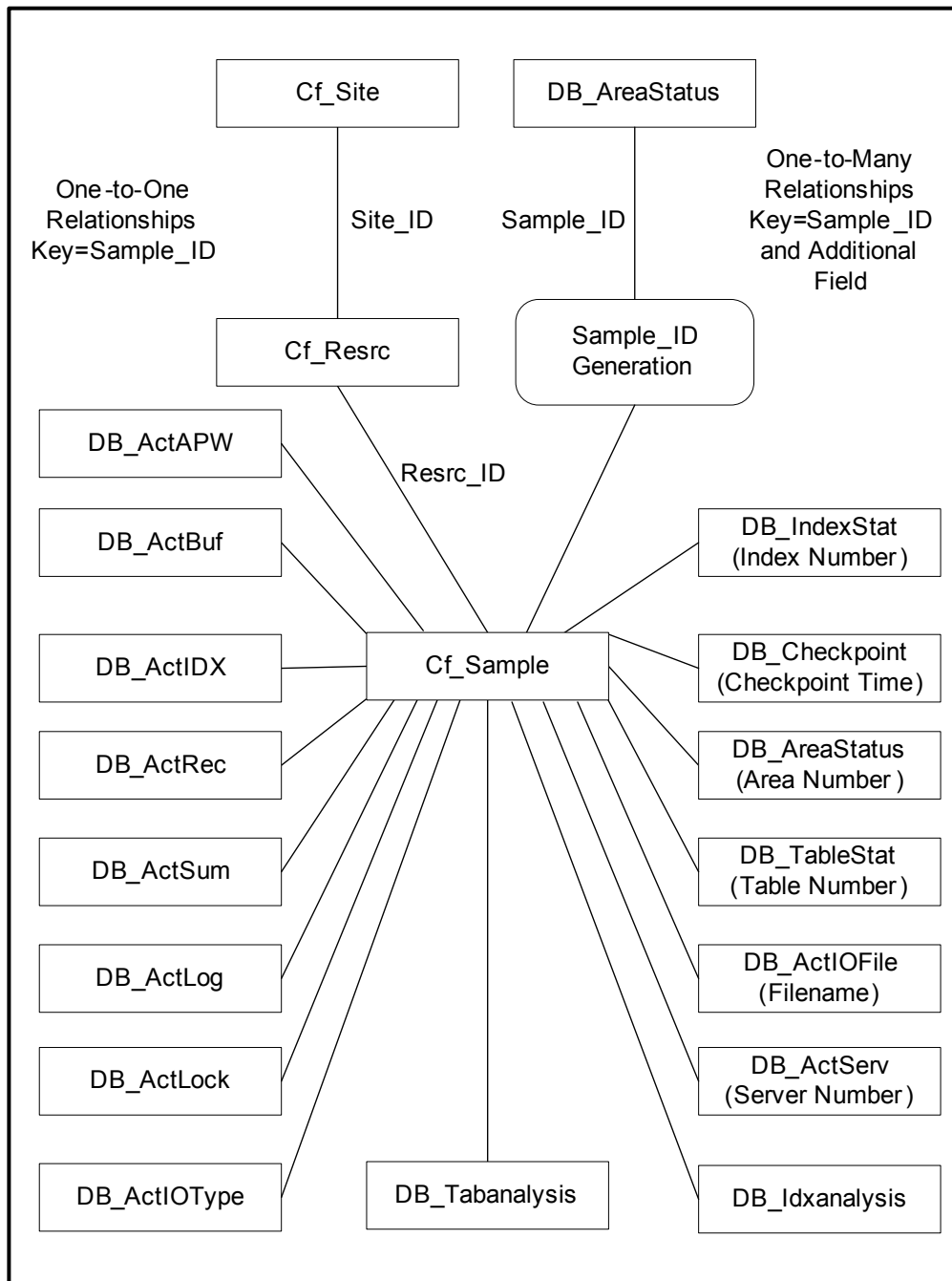


Figure 3–2 describes the data gathered for each trended database. Every DB_ table contains the sample's ID number. The sample table stores data from the gathered sample, which applies to all the tables. The sample table also contains the sample's Site and Resource IDs. A control record in the control table generates the Sample ID.

Contents of the FathomTrendDatabase tables

Table 3–5 describes each table and identifies from which VST the information is gathered.

Table 3–5: FathomTrendDatabase tables

(1 of 2)

Table name	Table contents	Description
ActAPW	Information from the _ActPWs VST.	Stores APW activity data, such as the number of buffer reads and writes.
ActBuf	Information from the _ActBuffer VST.	Stores buffer activity data, such as the number of marked and flushed buffers.
ActIdx	Information from the _Index and _ActIndex VSTs.	Stores index data about overall performance.
ActIOFile	Information from the _ActIOFile VST.	Stores I/O data about each database file, except for the .lk and .lg files.
ActIOType	Information from the _ActIOType VST.	Stores database I/O data, such as the number of BI and AI blocks read.
ActLock	Information from the _ActLock and _LockReq VSTs.	Stores lock activity data, such as the number of requests and the number of database locks.
ActLog	Information from the _ActAILog and _ActBILog VSTs.	Stores activity data about before- and after- imaging.
ActRec	Information from the _ActRecord and _ActSummary VSTs.	Stores performance data about record reads, writes, and updates.
ActServ	Information from the _ActServer and _Server VSTs.	Stores server process data, such as bytes and records sent and received and the number of users.

Table 3–5: FathomTrendDatabase tables*(2 of 2)*

Table name	Table contents	Description
AreaStatus	Information from the _AreaStatus VST.	Stores data about each area's HWM, Free Chain, and RM Chain.
ActSum	Information from the _ActSummary VST.	Stores database activity data, such as the number of records created and deleted.
Checkpoint	Information from the _Checkpoint VST.	Stores data about checkpoint operations.
IndexStat	Information from the _IndexStat and _Index VSTs.	Stores individual index data about reads and writes.

[Table 3–6](#) details each Schema table, including fields, data types, a brief description, and how data for this field is handled when data compaction activities occur.

For more information on each filename prefix, see [Table 3–1](#).

Table 3–6: FathomTrendDatabase table details*(1 of 16)*

Filename	Field name	Data type	Description	Compaction status
Db_ActAPW	ActAPW_APWQWrites	Decimal	Number of buffer writes from the APW queue.	Sum
Db_ActAPW	ActAPW_BufsCkpt	Decimal	Number of buffers checkpointed.	Sum
Db_ActAPW	ActAPW_BufsScanned	Decimal	Number of buffers scanned by the APWs.	Sum
Db_ActAPW	ActAPW_CkptQWrites	Decimal	Number of buffer writes from the checkpoint queue.	Sum
Db_ActAPW	ActAPW_Ckpts	Decimal	Number of checkpoints.	Sum

Table 3–6: FathomTrendDatabase table details*(2 of 16)*

Filename	Field name	Data type	Description	Compaction status
Db_ActAPW	ActAPW_DBWrites	Decimal	Number of database writes performed by all APWs.	Sum
Db_ActAPW	ActAPW_Flushed	Decimal	Number of buffers flushed at checkpoint.	Sum
Db_ActAPW	ActAPW_Marked	Decimal	Number of buffers marked for writing.	Sum
Db_ActAPW	ActAPW_ScanCycles	Decimal	Number of times an APW cycled through its tasks.	Sum
Db_ActAPW	ActAPW_ScanWrites	Decimal	Number of scan buffer writes.	Sum
Db_ActAPW	ActAPW_TotDBWrites	Decimal	Number of database writes performed by all processes.	Sum
Db_ActAPW	ActAPW_APWEnq	Decimal	Number of buffers added to the APW queue.	Sum
Db_ActAPW	ActAPW_User1	Character	User-definable field.	Delete
Db_ActAPW	Sample_ID	Integer	Identification number of the gathered sample.	Modify
Db_ActBuf	ActBuf_Deferred	Decimal	Number of deferred buffer writes.	Sum
Db_ActBuf	ActBuf_Flushed	Decimal	Database buffers flushed at checkpoint.	Sum
Db_ActBuf	ActBuf_LogicReads	Decimal	Number of logical database buffer reads performed by all processes.	Sum

Table 3–6: FathomTrendDatabase table details*(3 of 16)*

Filename	Field name	Data type	Description	Compaction status
Db_ActBuf	ActBuf_LogicWrites	Decimal	Number of logical database writes performed by all processes.	Sum
Db_ActBuf	ActBuf_OSReads	Decimal	Number of physical OS database buffer reads performed by all processes.	Sum
Db_ActBuf	ActBuf_OSWrites	Decimal	Number of physical OS database writes performed by all processes.	Sum
Db_ActBuf	ActBuf_User1	Character	User-definable field.	Delete
Db_ActBuf	Sample_ID	Integer	Identification number of the gathered sample.	Modify
Db_ActIdx	ActIdx_Create	Decimal	Number of index keys created.	Sum
Db_ActIdx	ActIdx_Delete	Decimal	Number of index keys deleted.	Sum
Db_ActIdx	ActIdx_Find	Decimal	Number of index keys requested.	Sum
Db_ActIdx	ActIdx_Free	Decimal	Number of index blocks placed on the free chain.	Sum
Db_ActIdx	ActIdx_Remove	Decimal	Number of deleted blocks removed at the end of a transaction.	Sum
Db_ActIdx	ActIdx_Splits	Decimal	Number of index block splits performed.	Sum
Db_ActIdx	ActIdx_User1	Character	User-definable field.	Delete

Table 3–6: FathomTrendDatabase table details*(4 of 16)*

Filename	Field name	Data type	Description	Compaction status
Db_ActIdx	Sample_ID	Integer	Identification number of the gathered sample.	Modify
Db_ActIOFile	ActIOFile_BufReads	Decimal	Number of buffered reads from the file.	Sum
Db_ActIOFile	ActIOFile_BufWrites	Decimal	Number of buffered writes to the file.	Sum
Db_ActIOFile	ActIOFile_Extends	Decimal	Number of times the file was extended.	Sum
Db_ActIOFile	ActIOFile_FileName	Character	Name of the file being reported on.	Delete
Db_ActIOFile	ActIOFile_Reads	Decimal	The number of times the file was read — buffered and unbuffered.	Sum
Db_ActIOFile	ActIOFile_UnbufReads	Decimal	The number of times the file was read in unbuffered mode.	Sum
Db_ActIOFile	ActIOFile_UnbufWrites	Decimal	The number of times the file was written in unbuffered mode.	Sum
Db_ActIOFile	ActIOFile_User1	Character	User-definable field.	Delete
Db_ActIOFile	ActIOFile_Writes	Decimal	The number of writes to the file — buffered and unbuffered.	Sum
Db_ActIOFile	ActIOFile_Sample_ID	Integer	Sequential identification number of the resource.	Modify
Db_ActIOType	ActIOType_AiReads	Decimal	Number of AI blocks read.	Sum
Db_ActIOType	ActIOType_AiWrites	Decimal	Number of AI blocks written.	Sum

Table 3–6: FathomTrendDatabase table details*(5 of 16)*

Filename	Field name	Data type	Description	Compaction status
Db_ActIOType	ActIOType_BiReads	Decimal	Number of BI blocks read.	Sum
Db_ActIOType	ActIOType_BiWrites	Decimal	Number of BI blocks written.	Sum
Db_ActIOType	ActIOType_DataReads	Decimal	Number of RM blocks read.	Sum
Db_ActIOType	ActIOType_DataWrites	Decimal	Number of RM blocks written.	Sum
Db_ActIOType	ActIOType_IdxReads	Decimal	Number of index blocks read.	Sum
Db_ActIOType	ActIOType_IdxWrites	Decimal	Number of index blocks written.	Sum
Db_ActIOType	ActIOType_User1	Character	User-definable field.	Delete
Db_ActIOType	Sample_ID	Integer	Sequential identification number of the resource.	Modify
Db_ActLock	ActLock_CancelReq	Decimal	Number of lock requests cancelled.	Sum
Db_ActLock	ActLock_Downgrade	Decimal	Number of downgraded locks.	Sum
Db_ActLock	ActLock_ExclFind	Decimal	Number of times an unused, exclusive lock was down.	Sum
Db_ActLock	ActLock_ExclLock	Decimal	Number of exclusive locks granted.	Sum
Db_ActLock	ActLock_ExclReq	Decimal	Number of exclusive locks requested by all processes.	Sum

Table 3–6: FathomTrendDatabase table details*(6 of 16)*

Filename	Field name	Data type	Description	Compaction status
Db_ActLock	ActLock_ExclWait	Decimal	Number of times a process had to wait for an exclusive lock.	Sum
Db_ActLock	ActLock_RecGetLock	Decimal	Number of no-lock requests granted.	Sum
Db_ActLock	ActLock_RecGetReq	Decimal	Number of no-lock records requested for all processes.	Sum
Db_ActLock	ActLock_RecGetWait	Decimal	Number of times a process waited for a no-lock.	Sum
Db_ActLock	ActLock_ShrFind	Decimal	Number of times an unused shared lock was downgraded.	Sum
Db_ActLock	ActLock_ShrLock	Decimal	Number of shared locks granted.	Sum
Db_ActLock	ActLock_ShrReq	Decimal	Number of shared locks requested for all processes.	Sum
Db_ActLock	ActLock_ShrWait	Decimal	Number of times a process waited for a shared lock.	Sum
Db_ActLock	ActLock_UpgLock	Decimal	Number of upgrade lock requests granted.	Sum
Db_ActLock	ActLock_UpgReq	Decimal	Number of lock upgrades requested for all processes.	Sum
Db_ActLock	ActLock_UpgWait	Decimal	Number of times a process waited for a lock upgrade.	Sum
Db_ActLock	ActLock_User1	Character	User-definable field.	Delete

Table 3–6: FathomTrendDatabase table details*(7 of 16)*

Filename	Field name	Data type	Description	Compaction status
Db_ActLock	Sample_ID	Integer	Identification number of the gathered sample.	Modify
Db_ActLog	ActLog_AIBBufWaits	Decimal	Number of AI busy buffer waits experienced.	Sum
Db_ActLog	ActLog_AIByteWrites	Decimal	Number of AI bytes written to the after-image file.	Sum
Db_ActLog	ActLog_AINoBufAvail	Decimal	Number of times there were no AI buffers available.	Sum
Db_ActLog	ActLog_AIPartialWrites	Decimal	Number of partial AI buffer writes performed.	Sum
Db_ActLog	ActLog_AIRecWrites	Decimal	Number of notes written to the AI file.	Sum
Db_ActLog	ActLog_AITotWrites	Decimal	Number of AI writes performed by all processes.	Sum
Db_ActLog	ActLog_AIWWrites	Decimal	Number of AI writes performed by the AIW.	Sum
Db_ActLog	ActLog_BIBBufWaits	Decimal	Number of BI busy buffer waits experienced.	Sum
Db_ActLog	ActLog_BIByteReads	Decimal	Number of BI bytes read by all processes.	Sum
Db_ActLog	ActLog_BIByteWrites	Decimal	Number of BI bytes written to the BI file.	Sum
Db_ActLog	ActLog_BIEBufWaits	Decimal	Number of BI empty buffer waits experienced.	Sum

Table 3–6: FathomTrendDatabase table details*(8 of 16)*

Filename	Field name	Data type	Description	Compaction status
Db_ActLog	ActLog_BIPartialWrites	Decimal	Number of partial BI buffer writes performed.	Sum
Db_ActLog	ActLog_BIRecReads	Decimal	Number of BI notes read by all processes.	Sum
Db_ActLog	ActLog_BIRecWrites	Decimal	Number of all BI notes written to the BI file.	Sum
Db_ActLog	ActLog_BITotReads	Decimal	Number of BI block reads performed by all processes.	Sum
Db_ActLog	ActLog_BITotWrites	Decimal	Number of BI writes performed by all processes.	Sum
Db_ActLog	ActLog_BIWWrites	Decimal	Number of BI writes performed by the BIW.	Sum
Db_ActLog	ActLog_User1	Character	User-definable field.	Delete
Db_ActLog	Sample_ID	Integer	Identification number of the gathered sample.	Modify
Db_ActRec	ActRec_ByteCreate	Decimal	Size, in bytes, created by all processes.	Sum
Db_ActRec	ActRec_ByteDel	Decimal	Number of bytes deleted by all processes.	Sum
Db_ActRec	ActRec_ByteRead	Decimal	Number of bytes read by all processes.	Sum
Db_ActRec	ActRec_ByteUpd	Decimal	Number of bytes updated by all processes.	Sum

Table 3–6: FathomTrendDatabase table details*(9 of 16)*

Filename	Field name	Data type	Description	Compaction status
Db_ActRec	ActRec_FragCreate	Decimal	Number of record fragment creates performed by all processes.	Sum
Db_ActRec	ActRec_FragDel	Decimal	Number of record fragment deletes performed by all processes.	Sum
Db_ActRec	ActRec_FragRead	Decimal	Number of record fragment reads performed by all processes.	Sum
Db_ActRec	ActRec_FragUpd	Decimal	Number of record fragment updates performed by all processes.	Sum
Db_ActRec	ActRec_RecCreate	Decimal	Number of record creates performed by all processes.	Sum
Db_ActRec	ActRec_RecDel	Decimal	Number of record deletes performed by all processes.	Sum
Db_ActRec	ActRec_RecLock	Decimal	Number of record locks created for all processes.	Sum
Db_ActRec	ActRec_RecRead	Decimal	Number of record reads performed by all processes.	Sum
Db_ActRec	ActRec_RecUpd	Decimal	Number of record updates performed by all processes.	Sum
Db_ActRec	ActRec_RecWait	Decimal	Number of record waits for all processes.	Sum

Table 3–6: FathomTrendDatabase table details*(10 of 16)*

Filename	Field name	Data type	Description	Compaction status
Db_ActRec	ActRec_User1	Character	User-definable field.	Delete
Db_ActRec	Sample_ID	Integer	Identification number of the gathered sample.	Modify
Db_ActServ	ActServ_ByteRec	Decimal	Number of bytes received from the client for this server.	Sum
Db_ActServ	ActServ_ByteSent	Decimal	Number of bytes sent to the client for the server.	Sum
Db_ActServ	ActServ_CurrUsers	Decimal	Number of current logins to the server.	Average
Db_ActServ	ActServ_Logins	Decimal	Highest number of simultaneous logins for the server.	Average
Db_ActServ	ActServ_MaxUsers	Decimal	Maximum number of logins to the server.	Average
Db_ActServ	ActServ_MsgRec	Decimal	Number of promsgs received from the client.	Sum
Db_ActServ	ActServ_MsgSent	Decimal	Number of promsgs sent to the client for the server.	Sum
Db_ActServ	ActServ_Num	Decimal	Server number for the database.	Save
Db_ActServ	ActServ_PID	Integer	Process identification number of the server.	Delete
Db_ActServ	ActServ_PortNum	Integer	Port number on which the server operates.	Delete
Db_ActServ	ActServ_QryRec	Decimal	Number of queries received from the client for the server.	Sum

Table 3–6: FathomTrendDatabase table details*(11 of 16)*

Filename	Field name	Data type	Description	Compaction status
Db_ActServ	ActServ_RecRec	Decimal	Number of records received from the client for the server.	Sum
Db_ActServ	ActServ_RecSent	Decimal	Number of records sent to the client for the server.	Sum
Db_ActServ	ActServ_TimeSlice	Decimal	Number of times the limit number of records for a request has been interrupted to service another.	Sum
Db_ActServ	ActServ_Type	Character	The type of server (SQL, 4GL, etc.).	Save
Db_ActServ	ActServ_User1	Character	User-definable field.	Delete
Db_ActServ	Sample_ID	Integer	Identification number of the gathered sample.	Modify
Db_ActSum	ActSum_AllocNewRm	Decimal	Number of times space was allocated on the RM.	Sum
Db_ActSum	ActSum_BytesAlloc	Decimal	Number of bytes allocated for records.	Sum
Db_ActSum	ActSum_Examined	Decimal	Number of examined data blocks on the RM chain.	Sum
Db_ActSum	ActSum_FromFree	Decimal	Number of times space was allocated from the free chain.	Sum
Db_ActSum	ActSum_FromRm	Decimal	Number of times space was allocated from the RM chain.	Sum

Table 3–6: FathomTrendDatabase table details*(12 of 16)*

Filename	Field name	Data type	Description	Compaction status
Db_ActSum	ActSum_Removed	Decimal	Number of blocks removed from the RM chain.	Sum
Db_ActSum	ActSum_RetFree	Decimal	Number of times a free block was returned to the free chain.	Sum
Db_ActSum	ActSum_TakeFree	Decimal	Number of times a free block was taken from the free chain.	Sum
Db_ActSum	ActSum_AiWrites	Decimal	Number of AI block writes performed by all processes.	Sum
Db_ActSum	ActSum_BiReads	Decimal	Number of BI block reads performed by all processes.	Sum
Db_ActSum	ActSum_BiWrites	Decimal	Number of BI block writes performed by all processes.	Sum
Db_ActSum	ActSum_Commits	Decimal	Number of commits performed by all processes.	Sum
Db_ActSum	ActSum_DbAccesses	Decimal	Number of database block requests by all processes.	Sum
Db_ActSum	ActSum_DbExtend	Decimal	Number of times the database was extended.	Sum
Db_ActSum	ActSum_DbReads	Decimal	Number of database block reads performed by all processes.	Sum
Db_ActSum	ActSum_DbWrites	Decimal	Number of database block writes performed by all processes.	Sum

Table 3–6: FathomTrendDatabase table details*(13 of 16)*

Filename	Field name	Data type	Description	Compaction status
Db_ActSum	ActSum_Undos	Decimal	Number of transaction undos or backouts performed.	Sum
Db_ActSum	ActSum_User1	Character	User-definable field.	Delete
Db_ActSum	Sample_ID	Integer	Identification number of the gathered sample.	Modify
Db_AreaStatus	Sample_ID	Integer	Identification number of the gathered sample.	Modify
Db_AreaStatus	AreaStatus_AreaName	Character	Name of the area.	Save
Db_AreaStatus	AreaStatus_AreaNum	Decimal	Number of the area.	Save
Db_AreaStatus	AreaStatus_TotBlocks	Decimal	Total number of blocks in the area.	Average
Db_AreaStatus	AreaStatus_Hiwater	Decimal	Largest number of blocks to which the database has grown.	Average
Db_AreaStatus	AreaStatus_Extents	Decimal	Number of extents in the area.	Save
Db_AreaStatus	AreaStatus_FreeNum	Decimal	Number of free blocks.	Average
Db_AreaStatus	AreaStatus_RMNum	Decimal	Number of Record Manager (RM) blocks on the RM chain.	Average
Db_AreaStatus	AreaStatus_User1	Character	User-definable field.	Delete
Db_Checkpoint	Checkpoint_ApwQ	Decimal	Number of buffers placed in the APW write queue.	Average
Db_Checkpoint	Checkpoint_CkptQ	Decimal	Number of buffers placed in the checkpoint queue.	Average

Table 3–6: FathomTrendDatabase table details*(14 of 16)*

Filename	Field name	Data type	Description	Compaction status
Db_Checkpoint	Checkpoint_Date	Date	The date the checkpoint started.	Delete
Db_Checkpoint	Checkpoint_Dirty	Decimal	Number of dirty buffers at the beginning of the checkpoint.	Average
Db_Checkpoint	Checkpoint_Flush	Decimal	Number of buffers flushed at the end of the checkpoint.	Average
Db_Checkpoint	Checkpoint_ID	Integer	Sequential identification number of the process.	Average
Db_Checkpoint	Checkpoint_Length	Character	Length, in seconds, of the checkpoint.	Average
Db_Checkpoint	Checkpoint_Num	Integer	Checkpoint number.	Average
Db_Checkpoint	Checkpoint_Scan	Integer	Number of buffers scanned by all of the APWs.	Average
Db_Checkpoint	Checkpoint_Time	Character	Begin time for the checkpoint.	Average
Db_Checkpoint	Checkpoint_User1	Character	User-definable field.	Delete
Db_Checkpoint	Sample_ID	Integer	Identification number of the sample.	Modify
Db_IndexStat	IndexStat_Blockdelete	Decimal	Number of blocks deleted from the index by all processes.	Sum
Db_IndexStat	IndexStat_Create	Decimal	Number of keys created in the index by all processes.	Sum
Db_IndexStat	IndexStat_Delete	Decimal	Index ID in the database.	Sum

Table 3–6: FathomTrendDatabase table details*(15 of 16)*

Filename	Field name	Data type	Description	Compaction status
Db_IndexStat	IndexStat_ID	Integer	Sequential identification number of the record.	Modify
Db_IndexStat	IndexStat_Indexname	Character	The name of the index for this information.	Save
Db_IndexStat	IndexStat_IdxNum	Integer	Index number within the database.	Save
Db_IndexStat	IndexStat_Read	Decimal	Number of keys read in the index by all processes.	Sum
Db_IndexStat	IndexStat_Split	Decimal	Number of blocks split in the index by all processes.	Sum
Db_IndexStat	IndexStat_User1	Character	User-definable field.	Delete
Db_IndexStat	Sample_ID	Integer	Identification number of the gathered sample.	Modify
Db_TableStat	Sample_ID	Integer	Identification number of the gathered sample.	Modify
Db_TableStat	TableStat_Create	Decimal	Number of records created in the table by all processes.	Sum
Db_TableStat	TableStat_Delete	Decimal	Number of records deleted from the table by all processes.	Sum
Db_TableStat	TableStat_Read	Decimal	Number of records read in the table by all processes.	Sum
Db_TableStat	TableStat_TableID	Integer	Table number within the database.	Save
Db_TableStat	TableStat_TableName	Character	The name of the table for this information.	Save

Table 3–6: FathomTrendDatabase table details*(16 of 16)*

Filename	Field name	Data type	Description	Compaction status
Db_TableStat	TableStat_Update	Decimal	Number of records updated in the table by all processes.	Sum
Db_TableStat	TableStat_User1	Character	User-definable field.	Delete

Compaction details for database tables

[Table 3–7](#) summarizes how the compaction process affects data rows contained in the database tables.

Table 3–7: Configuration tables and the compaction process*(1 of 2)*

Database table	What happens to table data during compaction
Db_ActAPW	This is a multi-row table in which most rows are summed during the compaction process.
Db_ActBuf	This is a multi-row table in which most rows are summed during the compaction process.
Db_ActIdx	This is a multi-row table in which most rows are summed during the compaction process.
Db_ActIOFile	This is a multi-row table. The key to this table is Sample_ID and FileName.
Db_ActLock	This is a multi-row table in which most rows are summed during the compaction process.
Db_ActRec	This is a multi-row table in which most rows are summed during the compaction process.
Db_ActSum	This is a multi-row table in which most rows are summed during the compaction process.
Db_Checkpoint	Data is deleted and not compacted.
Db_TableStat	This is a multi-row table. The key to this table is Sample_ID and TableID.

Table 3–7: Configuration tables and the compaction process (2 of 2)

Database table	What happens to table data during compaction
Db_IndexStat	This is a multi-row table. The key to this table is Sample_ID and IndexNum.
Db_ActServ	The compaction process reflects a mixing of sums and averages. This is a multi-row table. The key to this table is Sample_ID and Server Number. Every time you start and stop the database, the servers change.
DB_ActLog	This is a multi-row table in which most rows are summed during the compaction process.
DB_ActIOType	This is a multi-row table in which most rows are summed during the compaction process.
Db_AreaStatus	This is a multi-row table. The key to this table is Sample_ID and Area Name.

OpenEdge tables

The schema of OpenEdge tables is dependent upon many subsystems. [Figure 3–3](#) shows the schema of AppServer tables.

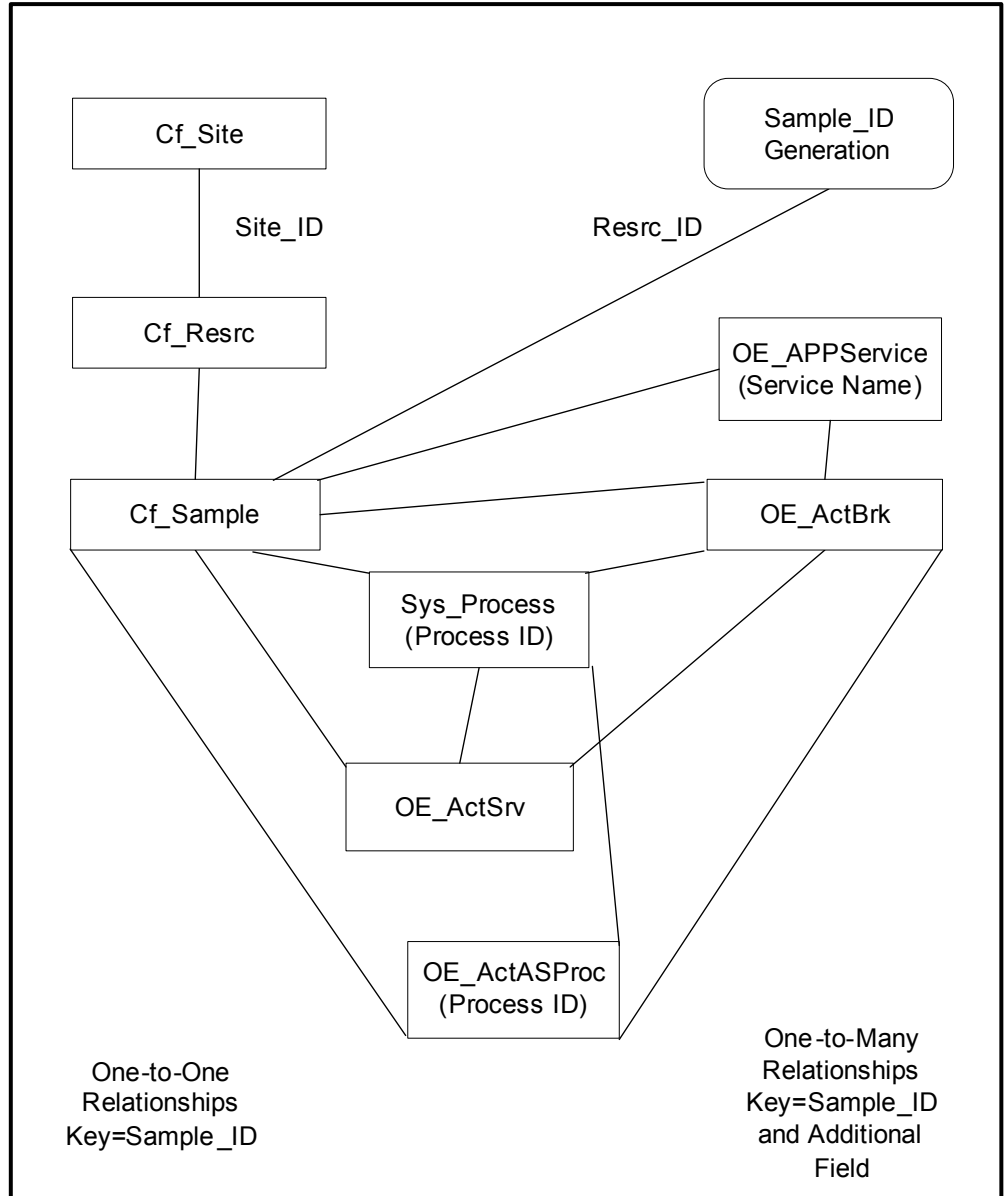


Figure 3–3: OpenEdge AppServer table relationships

Figure 3–4 shows the schema of WebSpeed tables.

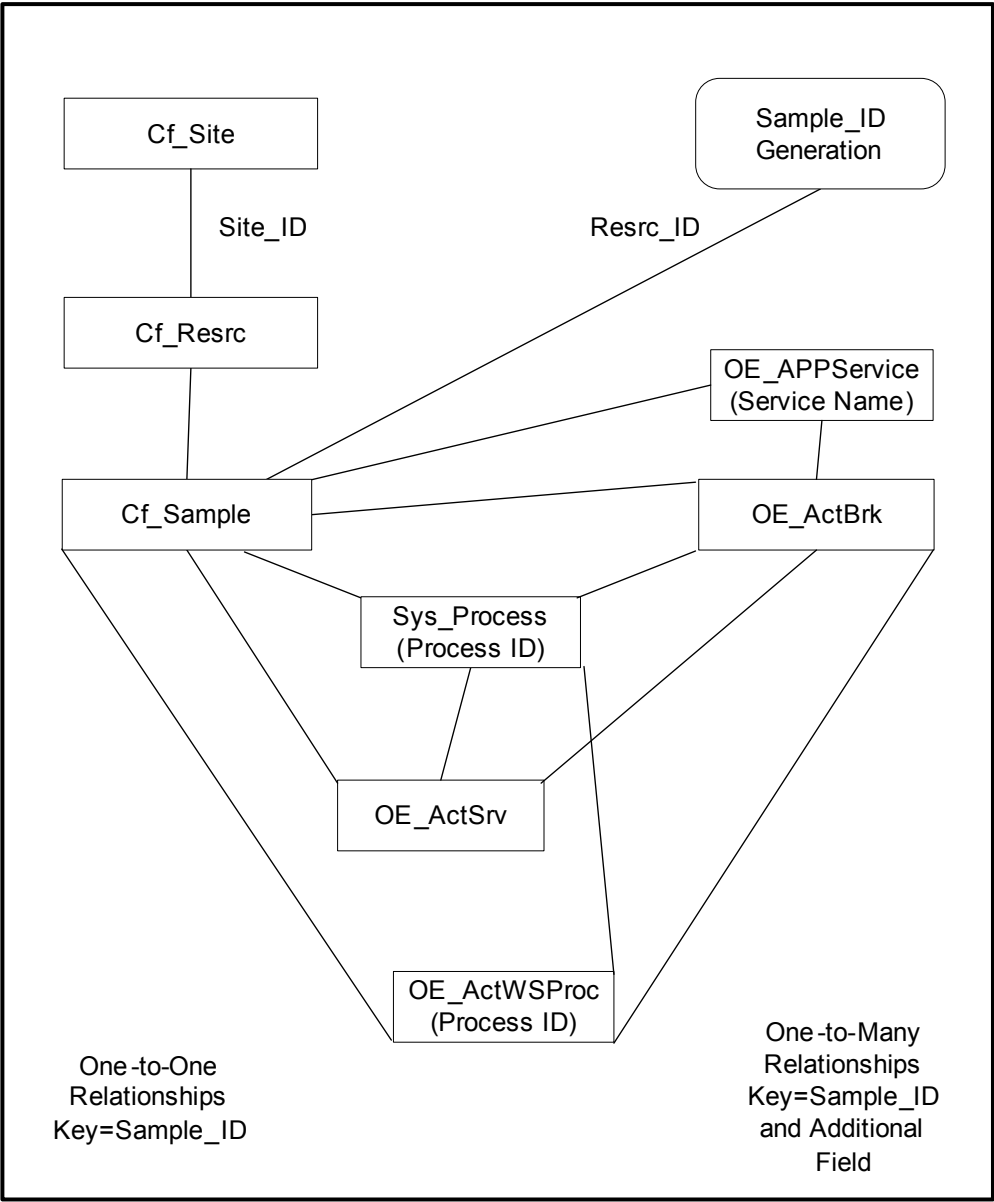


Figure 3–4: OpenEdge WebSpeed table relationships

If you configure Fathom to monitor WebSpeed and/or AppServer resources, Fathom stores the data in the tables listed in [Table 3–8](#).

Table 3–8: OpenEdge tables

Table name	Table contents	Description
ActASProc	AppServer Data	Contains information about each procedure executed for the AppServer.
ActBrk	Broker Data	Contains information about AppServer and WebSpeed broker activity requests.
ActSrv	Server Data	Contains information about OpenEdge broker server activity.
ActWSProc	WebSpeed Data	Contains information about each procedure executed for WebSpeed.
APPService	Application Data	Contains information about application services.

[Table 3–9](#) details each OpenEdge table including fields, data types, brief descriptions, and how data for each field is handled during data compaction.

For more information on the filename prefix, see [Table 3–1](#).

Table 3–9: OpenEdge table details

(1 of 5)

Filename	Field name	Data type	Description	Compaction status
OE_ActASProc	Sample_ID	Integer	Identification number of the gathered sample.	Modify
OE_ActASProc	ActBrk_PID	Decimal	Identification number of the broker process.	Save
OE_ActASProc	ActBrk_UUID	Character	Broker UUID for the broker process.	Save
OE_ActASProc	ActASProc_Name	Character	Name of the procedure.	Save
OE_ActASProc	ActASProc_Calls	Decimal	Number of times the procedure has been called.	Sum

Table 3–9: OpenEdge table details*(2 of 5)*

Filename	Field name	Data type	Description	Compaction status
OE_ActASProc	ActASProc_TotTime	Decimal	Cumulative time the procedure has run.	Sum
OE_ActASProc	ActASProc_MaxTime	Decimal	Longest amount of time that the procedure has run.	Average
OE_ActASProc	ActASProc_Parent	Character	Name of the parent procedure.	Save
OE_ActASProc	ActASProc_ProcType	Character	Type of procedure: internal, persistent, or user-defined.	Save
OE_ActASProc	ActASProc_SuccessCount	Decimal	Number of times the procedure completed with a success condition.	Sum
OE_ActASProc	ActASProc_ErrorCount	Decimal	Number of times the procedure completed with an error condition.	Sum
OE_ActASProc	ActASProc_QuitCount	Decimal	Number of times the procedure completed with a quit condition.	Sum
OE_ActASProc	ActASProc_StopCount	Decimal	Number of times the procedure completed with a stop condition.	Sum
OE_ActASProc	ActASProc_DebugCount	Decimal	Number of times the procedure completed with a debug condition.	Sum
OE_ActBrk	Sample_ID	Integer	Identification number of the gathered sample.	Modify
OE_ActBrk	ActBrk_PID	Decimal	Process identification number of the broker process.	Save
OE_ActBrk	ActBrk_UUID	Character	UUID of the broker process.	Save
OE_ActBrk	ActBrk_Name	Character	Name of the broker.	Save

Table 3–9: OpenEdge table details*(3 of 5)*

Filename	Field name	Data type	Description	Compaction status
OE_ActBrk	ActBrk_ReqRec	Decimal	Number of requests received by the broker.	Sum
OE_ActBrk	ActBrk_ReqComp	Decimal	Number of requests completed by the broker.	Sum
OE_ActBrk	ActBrk_ReqQueued	Decimal	Number of broker requests queued.	Sum
OE_ActBrk	ActBrk_ReqRejected	Decimal	Number of requests rejected by the broker.	Sum
OE_ActBrk	ActBrk_CurrClients	Decimal	Current client count for the broker.	Average
OE_ActBrk	ActBrk_TotClients	Decimal	Total number of clients that have connected to the broker.	Sum
OE_ActBrk	ActBrk_CurrServers	Integer	Current number of servers.	Average
OE_ActBrk	ActBrk_Mode	Character	Mode of the broker and servers: stateless, state-aware, state-reset, or state free.	Save
OE_ActBrk	ActBrk_CurrQueue	Integer	Current number of queued requests.	Average
OE_ActSrv	Sample_ID	Integer	Identification number of the gathered sample.	Modify
OE_ActSrv	ActBrk_PID	Decimal	Process identification number of the broker process.	Save
OE_ActSrv	ActBrk_UUID	Character	UUID of the broker process.	Save
OE_ActSrv	ActSrv_PID	Decimal	Process identification number of the server process.	Save

Table 3–9: OpenEdge table details*(4 of 5)*

Filename	Field name	Data type	Description	Compaction status
OE_ActSrv	ActSrv_Status	Character	Current status of the server.	Save
OE_ActSrv	ActSrv_IdleCount	Decimal	Number of times an agent has become idle.	Sum
OE_ActSrv	ActSrv_IdleTime	Decimal	Amount of time an agent has spent idle.	Sum
OE_ActSrv	ActSrv_BusyCount	Decimal	Number of times an agent has had a status of busy.	Sum
OE_ActSrv	ActSrv_BusyTime	Decimal	Amount of time an agent has had a busy status.	Sum
OE_ActSrv	ActSrv_LockedCount	Decimal	Number of times an agent has had a status of locked.	Sum
OE_ActSrv	ActSrv_LockedTime	Decimal	Amount of time an agent has had a status of locked.	Sum
OE_ActWSProc	Sample_ID	Integer	Identification number of the gathered sample.	Modify
OE_ActWSProc	ActBrk_PID	Decimal	Process identification number of the broker process.	Save
OE_ActWSProc	ActBrk_UUID	Character	UUID of the broker process.	Save
OE_ActWSProc	ActWSProc_Name	Character	Name of the procedure.	Save
OE_ActWSProc	ActWSProc_Calls	Decimal	Number of times the procedure has been called.	Sum
OE_ActWSProc	ActWSProc_TotTime	Decimal	Amount of time the process has run.	Sum
OE_ActWSProc	ActWSProc_MaxTime	Decimal	Longest amount of time the procedure has run.	Average
OE_ActWSProc	ActWSProc_Parent	Character	Parent procedure.	Save

Table 3–9: OpenEdge table details*(5 of 5)*

Filename	Field name	Data type	Description	Compaction status
OE_ActWSProc	ActWSProc_ProcType	Character	Procedure type: internal, persistent, or user-defined.	Save
OE_APPService	Sample_ID	Integer	Identification number of the gathered sample.	Modify
OE_APPService	APPS_ServiceName	Character	Application service name.	Save
OE_APPService	ActBrk_UUID	Character	UUID of the broker process.	Save

System tables

If you configure Fathom to monitor system resources, Fathom stores the gathered data in the Trend Database System tables. [Table 3–10](#) lists each System table’s contents.

Table 3–10: System tables*(1 of 2)*

Table name	Table contents	Description
CPU	CPU data	Contains CPU data for Fathom instances that are trended to the FathomTrendDatabase.
Memory	Memory data	Contains Memory data for the Fathom instances that are trended to the FathomTrendDatabase.
Dev	Disk Device data	Contains Disk Device data for the Fathom instances that are trended to the FathomTrendDatabase. The disk device is typically a local drive, but can also be an NFS-type drive.
FileSys	File System data	Contains File System data for the Fathom instances that are trended to the FathomTrendDatabase.

Table 3–10: System tables (2 of 2)

Table name	Table contents	Description
FileSize	File Size data	Contains File Size data for monitored files.
Process	Process data	Contains data about OpenEdge server processes.

Table 3–11 lists the field names, data types, a brief description, and how data for this field is handled when data compaction activities occur for each System table. For more information on the filename prefix, see Table 3–1.

Table 3–11: System table details (1 of 4)

Filename	Field name	Data type	Description	Compaction status
Sys_CPU	CPU_System	Decimal	Percentage of system activity on the CPU.	Average
Sys_CPU	CPU_Idle	Integer	Percentage of time that the CPU is idle.	Average
Sys_CPU	CPU_User1	Character	User-definable field.	Delete
Sys_CPU	CPU_Usr	Decimal	Percentage of user activity on the CPU.	Average
Sys_CPU	CPU_Wait	Decimal	Percentage of wait I/O on the CPU.	Average
Sys_CPU	Sample_ID	Integer	Identification number of the gathered sample.	Modify
Sys_Dev	Dev_AvgQue	Decimal	Average of queue activity on the disk.	Sum

Table 3–11: System table details*(2 of 4)*

Filename	Field name	Data type	Description	Compaction status
Sys_Dev	Dev_AvgServ	Decimal	Average of service time on the disk.	Sum
Sys_Dev	Dev_AvgWait	Decimal	Average wait time on the disk.	Sum
Sys_Dev	Dev_Name	Character	Name of the device.	Save
Sys_Dev	Dev_Pct_Busy	Decimal	Percentage of time the device was busy.	Average
Sys_Dev	Dev_User1	Character	User-identifiable field.	Delete
Sys_Dev	Sample_ID	Integer	Identification number of the gathered sample.	Modify
Sys_Mem	Mem_PgIn	Integer	Number of memory pages paged in.	Sum
Sys_Mem	Mem_PgOut	Integer	Number of memory pages paged out.	Sum
Sys_Mem	Mem_SysFree	Decimal	Physical memory in system blocks free on the system.	Average
Sys_Mem	Mem_SysTot	Decimal	Physical memory in system blocks available on the machine.	Average
Sys_Mem	Mem_User1	Character	User-definable field.	Delete
Sys_Mem	Mem_VirtFree	Decimal	Virtual memory in system blocks free on the system.	Sum
Sys_Mem	Mem_VirtTot	Decimal	Virtual memory in system blocks available on the machine.	Sum
Sys_Mem	Sample_ID	Integer	Identification number of the gathered sample.	Modify

Table 3–11: System table details*(3 of 4)*

Filename	Field name	Data type	Description	Compaction status
Sys_FileSys	FileSys_Avail	Decimal	Number of available blocks on the file system.	Average
Sys_FileSys	FileSys_Capacity	Integer	Number of total blocks on the file system.	Average
Sys_FileSys	FileSys_Mount	Character	Name of directory where the file system is mounted.	Save
Sys_FileSys	FileSys_Name	Character	Name of the file system.	Save
Sys_FileSys	FileSys_UsedPct	Decimal	Percentage of the file system used.	Average
Sys_FileSys	FileSys_User1	Character	User-definable field.	Delete
Sys_FileSys	Sample_ID	Integer	Identification number of the gathered sample.	Modify
Sys_Process	Process_PID	Decimal	Process ID of the process being monitored.	Save
Sys_Process	Process_PPID	Decimal	Parent process ID of the process being monitored.	Save
Sys_Process	Process_CPUUser	Decimal	Amount of CPU time (in seconds) dedicated to user.	Sum
Sys_Process	Process_CPUSystem	Decimal	Amount of CPU time (in seconds) dedicated to system.	Sum
Sys_Process	Process_ElapsedTime	Decimal	Elapsed process time (in seconds) since last poll.	Average
Sys_Process	Process_CPUPct	Decimal	Percentage of CPU usage since last poll.	Average
Sys_Process	Process_CPUPctWT	Decimal	Percentage of CPU usage since last poll (weighted per CPU).	Average

Table 3–11: System table details*(4 of 4)*

Filename	Field name	Data type	Description	Compaction status
Sys_Process	Process_UserName	Character	Name of the user attached to the process.	Save
Sys_Process	Process_UserGroup	Character	Name of the group related to the process.	Save
Sys_Process	Process_Command	Character	The command executed. Note: This field contains only the executable.	Save
Sys_Process	Process_CommandArgs	Character	Arguments fed to the command.	Save
Sys_Process	Process_VirtMem	Decimal	Virtual memory size (as defined by the operating system).	Sum
Sys_Process	Process_ResMemory	Decimal	Resident memory size (as defined by the operating system).	Sum
Sys_Process	Process_StartTimeStamp	Character	Date and time that the process started.	Save
Sys_Process	Sample_ID	Integer	Identification number of the gathered sample.	Modify

The schema of system tables is dependent upon many subsystems. [Figure 3–5](#) diagrams the relationship among the different system tables.

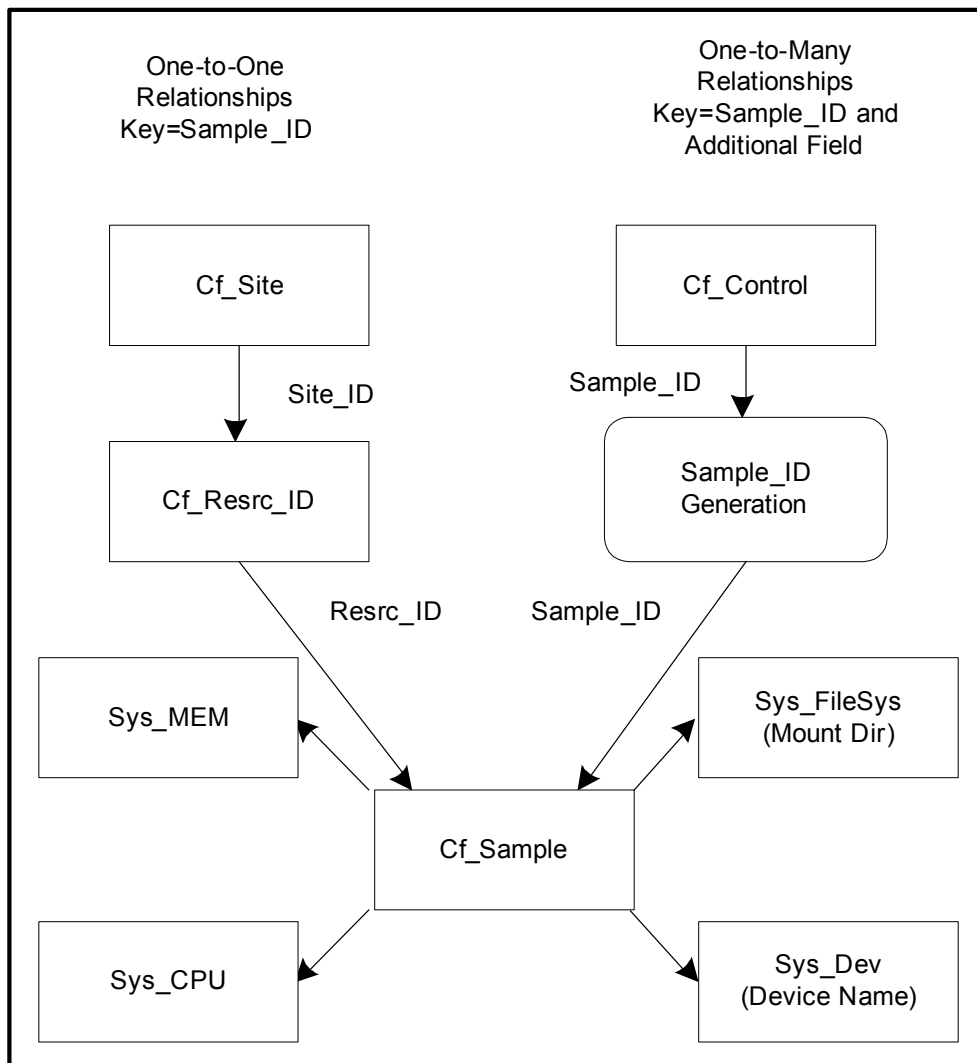


Figure 3–5: System table relationships

[Figure 3–5](#) describes the data gathered about trended system information. Every **SYS_** table contains the sample's ID number. The sample table stores data from the gathered sample that applies to all the tables. The sample table also contains the sample's Site and Resource IDs. A control record in the control table generates the Sample ID.

Compaction details for system tables

[Table 3–12](#) summarizes how the compaction process affects data rows contained in the specified tables.

Table 3–12: System tables and the compaction process

System table	What happens to table data during compaction
Sys_CPU	Averages will be stored.
Sys_Dev	This is a multi-row table. The key to this table is Sample_ID and Device Name.
Sys_Mem	Content reflects a mixing of compaction and averages.
Sys_FileSize	This is a multi-row table in which averages are stored. The key to this table is Sample_ID and Name 2 additional fields—Max and Min.
Sys_FileSys	This is a multi-row table in which averages are stored. The key to this table is Sample_ID and Mount.

Archive tables

You can archive data associated with database, OpenEdge, and system tables. You cannot archive data stored in configuration tables.

This section identifies:

- The database, OpenEdge, and system tables for which you can archive data. [Table 3–13](#) identifies the database tables that you can archive, [Table 3–14](#) identifies the system tables that you can archive, and [Table 3–15](#) identifies the OpenEdge tables that you can archive.
- Common archive-related fields that are generated for each table you archive.
- An example of archive data generated for an archived table.

Table 3–13 identifies and briefly describes each FathomTrendDatabase table that you can archive.

Table 3–13: Archive FathomTrendDatabase tables

(1 of 2)

Table name	Table contents	Description
Ar_ActAPW	Information from the _ActAPW VST.	Archives APW activity data, such as the number of buffer reads and writes.
Ar_ActBuf	Information from the _ActBuffer VST.	Archives buffer activity data, such as the number of marked and flushed buffers.
Ar_ActIdx	Information from the _Index and _ActIndex VSTs.	Archives index data about overall performance.
Ar_ActIOFile	Information from the _ActIOFile VST.	Archives I/O data about each database file, except for the .lk and .lg files.
Ar_ActIOType	Information from the _ActIOType VST.	Archives database I/O data, such as the number of BI and AI blocks read.
Ar_ActLock	Information from the _ActLock and _LockReq VSTs.	Archives lock activity data, such as the number of requests and the number of database locks.
Ar_ActLog	Information from the _ActAILog and _ActBILog VSTs.	Archives activity data about before- and after-imaging.
Ar_ActRec	Information from the _ActRecord and _ActSummary VSTs.	Archives performance data about record reads, writes, and updates.
Ar_ActServ	Information from the _ActServer and _Server VSTs.	Archives server process data, such as bytes and records sent and received and the number of users.
Ar_AreaStatus	Information from the _AreaStatus VST.	Archives data about each area's HWM, Free Chain, and RM Chain.
Ar_ActSum	Information from the _ActSummary VST.	Archives database activity data, such as the number of records created and deleted.

Table 3–13: Archive FathomTrendDatabase tables*(2 of 2)*

Table name	Table contents	Description
Ar_Checkpoint	Information from the _Checkpoint VST.	Archives data about checkpoint operations.
Ar_IndexStat	Information from the _IndexStat and _Index VSTs.	Archives individual index data about reads and writes.

Table 3–14 identifies and briefly describes each system table that you can archive.

Table 3–14: Archive system tables

Table name	Table contents	Description
Ar_CPU	CPU data	Archives CPU data for the host system.
Ar_Mem	Memory data	Archives Memory data for the host system.
Ar_Dev	Disk Device data	Archives Disk Device data for the host system. The disk device is typically a local drive, but can also be an NFS-type drive.
Ar_FileSys	File System data	Archives File System data for the host system.
Ar_FileSize	File Size data	Archives File Size data for monitored files.

Table 3–15 identifies and briefly describes each OpenEdge table that you can archive.

Table 3–15: Archive OpenEdge tables*(1 of 2)*

Table name	Table contents	Description
Ar_OE_ActASProc	AppServer data	Archives information about each procedure executed for the AppServer.
Ar_OE_ActBrk	Broker data	Archives information about AppServer and WebSpeed broker activity requests.

Table 3–15: Archive OpenEdge tables*(2 of 2)*

Table name	Table contents	Description
Ar_OE_ActServ	Server data	Archives information about AppServer and WebSpeed server and agent activity.
Ar_OE_ActWSProc	WebSpeed data	Archives information about each procedure executed for WebSpeed.
Ar_OE_AppService	Application data	Archives information about application services.

Common archive fields

You can archive data that is derived from the values stored in fields associated with database, OpenEdge, or system tables. An additional set of archive-specific fields for which unique values are defined during the archiving process is also generated for and stored with each archived table.

[Table 3–13](#) and [Table 3–14](#) define the unique fields associated with each database or system table. [Table 3–16](#) identifies the common fields for which values are generated and added to a table when you archive it.

Table 3–16: Common archive fields*(1 of 2)*

Field name	Data type	Description
_ArchiveType	Character	Identifies the field's archive type: H — Hourly D — Daily W — Weekly
_Length	Integer	Number of seconds for the archive to take place.
_StartDate	Date	Start date for the row. This date will always be the same as the end for hourly and daily.
_StartTime	Integer	Start time for the row.
_EndDate	Date	End date for the row.

Table 3–16: Common archive fields*(2 of 2)*

Field name	Data type	Description
_EndTime	Integer	End time for the row.
_Transactions	Integer	Number of transactions committed.
_RecordCount	Integer	Number of records in this archived file.
Resrc_ID	Integer	The Resource ID of the database for this site.
Site_ID	Character	The Site ID for the database.

Complete contents of an archived table

Table 3–17 identifies the table contents of the Ar_ActIdx, the archived version of the database table ActIdx, which stores index data about overall performance.

Table 3–17: Contents of the Ar_ActIdx table*(1 of 2)*

Field name	Data type	Description
ActIdx_Create	Decimal	Number of index keys created.
ActIdx_Delete	Decimal	Number of index keys deleted.
ActIdx_Find	Decimal	Number of index keys requested.
ActIdx_Free	Decimal	Number of index blocks placed on the free chain.
ActIdx_Remove	Decimal	Number of deleted blocks removed at the end of a transaction.
ActIdx_Splits	Decimal	Number of index block splits performed.
ActIdx_User1	Character	User-definable field.
Sample_ID	Integer	Identification number of the gathered sample.

Table 3–17: Contents of the Ar_ActIdx table*(2 of 2)*

Field name	Data type	Description
ActIdx_ArchiveType	Character	Identifies the field's archive type: H — Hourly D — Daily W — Weekly
ActIdx_Length	Integer	Number of seconds for the archive to take place.
ActIdx_StartDate	Date	Start date for the row. This date will always be the same as the end for hourly and daily.
ActIdx_StartTime	Integer	Start time for the row.
ActIdx_EndDate	Date	End date for the row.
ActIdx_EndTime	Integer	End time for the row.
ActIdx_Transactions	Integer	Number of transactions committed.
ActIdx_RecordCount	Integer	Number of records in this archived file.
Resrc_ID	Integer	The Resource ID of the database for this site.
Site_ID	Character	The Site_ID for the database.

Database analysis tables

This section presents the tables associated with performing database analysis to help determine trends in your data for planning and performance tuning. [Table 3–18](#) shows the contents of the Db_TabAnalysis. [Table 3–19](#) shows the contents of Db_IdxAnalysis.

Db_TabAnalysis table

The Db_TabAnalysis table stores all of the information related to table analysis for a specific table, refers to the Cf_Resrc and Cf_Site table using appropriate IDs, and stores the resource name.

Table 3–18: Db_TabAnalysis table details

(1 of 2)

Field name	Data type	Description	Default value
Tab_ID	Integer	Sequential ID of the row.	Next ID
Tab_TableName	Character	Table name used by the table. Tab_TableName is the same as _File-name.	N/A
Tab_RecordCount	Integer	The number of records in the table.	N/A
Tab_Bytes	Integer	The size, in total bytes, of all of the records in this table.	N/A
Tab_MinRecSize	Integer	The size, in bytes, of the smallest record in this table.	N/A
Tab_MaxRecSize	Integer	The size, in bytes, of the largest record in this table.	N/A
Tab_AveRecSize	Integer	The average record size, in bytes, for records in this table.	N/A
Tab_FragmentCount	Integer	A count of how many records within the database that were required to be physically split.	N/A
Tab_FragmentFactor	Decimal	A factor of how many records within the database that were required to be physically split.	1

Table 3–18: Db_TabAnalysis table details*(2 of 2)*

Field name	Data type	Description	Default value
Tab_ScatterFactor	Decimal	Indicates how far between records within the database.	N/A
Tab_ResrcName	Character	The name of the database resource.	N/A
Tab_Date	Date	This is the date that the analysis was run. It is extracted from the report.	N/A
Tab_Time	Integer	This is the time that the analysis was run. It is extracted from the report.	N/A
Site_ID ¹	Character	The Site_ID for the database.	N/A
Resrc_ID ¹	Integer	The Resource ID of the database for this site.	N/A

¹ The Site_ID and Resrc_ID fields are included in the table definitions. They are not required fields. However, they add value by providing the capability to tie the dbanalysis information back to the other information for that same database.

Db_IdxAnalysis table

The Db_IdxAnalysis table stores all of the information related to index analysis for a specific table, refers back to the Cf_Resrc and Cf_Site table using appropriate IDs, and stores the resource name.

Table 3–19: Db_IdxAnalysis table details*(1 of 2)*

Field name	Data type	Description	Default
Tab_ID	Integer	The sequential ID of the row.	Next ID
Idx_TableName	Character	The table name that the index references. Idx_TableName is the same as _File-name.	N/A

Table 3–19: Db_IdxAnalysis table details*(2 of 2)*

Field name	Data type	Description	Default
Idx_Number	Integer	The index number for the index within the database.	N/A
Idx_Bytes	Decimal	The size, in total bytes, of all of the index entries in this index for this table.	N/A
Idx_Blocks	Decimal	The number of blocks in this index.	N/A
Idx_UtilizationPct	Decimal	The percentage of index blocks that are filled.	N/A
Idx_Utilization Factor	Decimal	The average number of blocks between which the index is split.	N/A
Idx_IndexName	Character	The name of the index.	N/A
Idx_Levels	Decimal	Indicates how many levels deep the index traverses.	1
Idx_ResrcName	Character	The name of the database resource.	N/A
Idx_Date	Date	This is the date that the report was run. It is extracted from the report.	Report's content
Idx_Time	Integer	This is the time that the report was run. It is extracted from the report.	Report's content
Site_ID	Character	The Site_ID for the database.	N/A
Resrc_ID	Integer	The Resource ID of the database for this site.	N/A

Network table

The FathomTrendDatabase stores network data in the Net_Data table. [Table 3–20](#) shows the content of the Net_Data table.

Table 3–20: Net_Data table details

Field name	Data type	Description
Sample_ID	Integer	The sequential identification number of the gathered sample.
Net_Time	Integer	The amount of time it took the network resource to respond to the poll.
Net_Status	Character	The status of the returned poll: passed, failure, tardy, time-out, or unreachable.

Index

A

Archived data
 common fields 3–46
 example 3–47

D

Data compaction
 as a job 1–5, 2–3
 configuration tables 3–10
 database tables 3–29
 statistics 2–8
 system tables 3–43

Data Compaction jobs 2–2
 advanced information 2–6
 creating 2–3

Database Maintenance job templates
 advanced information 2–6
 environment variables 2–8
 trend data compaction 2–2

F

FathomTrendDatabase
 data
 compacting 1–4, 2–3
 purging 1–5, 2–3
 retaining 1–5
 managing 1–2
 size 1–2

FathomTrendDatabase schema
 analysis tables 3–49 to 3–51
 archive tables 3–3, 3–43 to 3–46
 configuration tables 3–2, 3–4 to 3–10
 definitions 3–2
 FathomTrendDatabase tables 3–2, 3–11
 to 3–29
 network table 3–52
 OpenEdge
 AppServer 3–31
 WebSpeed 3–32
 OpenEdge tables 3–3, 3–31 to 3–37
 system tables 3–2, 3–37 to 3–42
 table and field name definitions 3–2

L

Log file viewers 2–10
 dead 2–11
 stale 2–11

